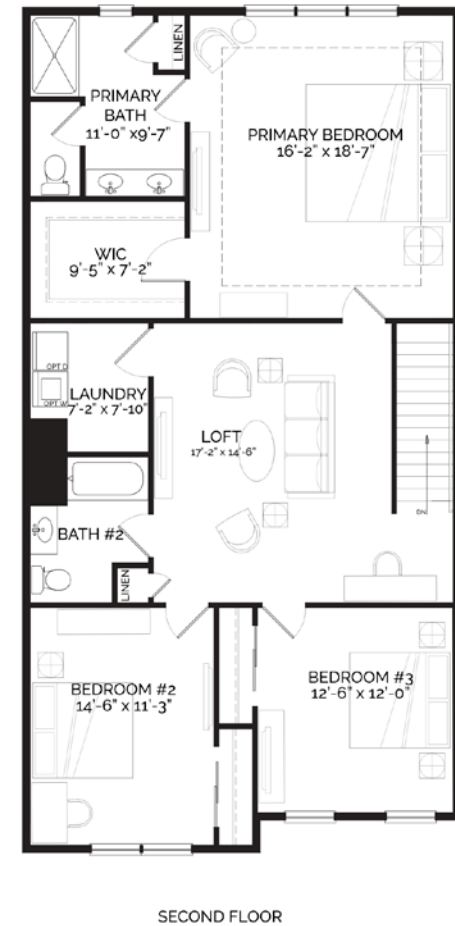
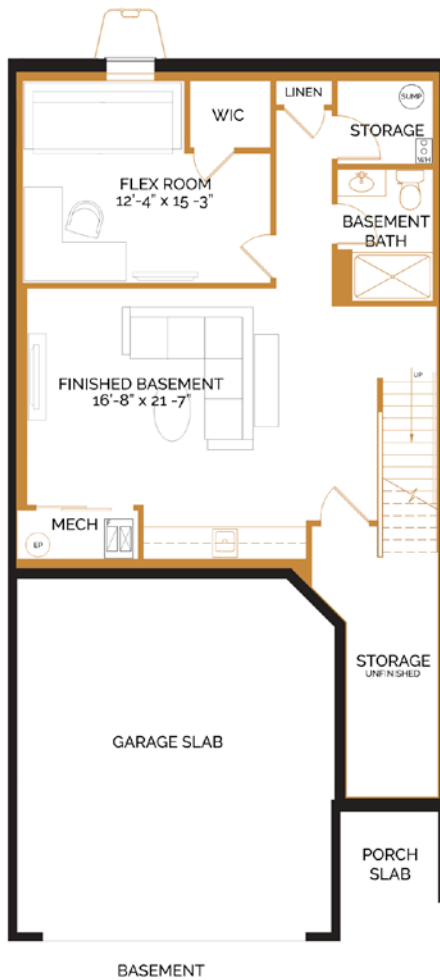


Carlisle

2,299 SQ. FT. • 3 BEDROOMS • 2½ BATHS • 2-CAR GARAGE

2,992 SQ. FT. • 3-4 BEDROOMS • 3½ BATHS • WITH FINISHED BASEMENT



(OPTIONAL FINISHED BASEMENT WITH FLEX ROOM AND WET BAR)

All dimensions are approximate and subject to change. Window locations and bump outs will vary based on elevations. Floorplans are for illustrative purposes only. Please see sales manager for details. Developer reserves the right to make modifications without notice. This brochure is for illustrative purposes only and is not part of a legal contract.

